

## WHAT'S NEW IN GALILEO SYSTEM 2.4.1

Galileo Firmware and Compass Control Software v2.4.1 adds compatibility for Mac OS 10.6 as well as the ability to customize the Galileo Map Control Dialog Window.

Use this addendum as a supplement to the *Galileo User Guide, Compass 2.1.1, 2.2.0, and 2.4.0 User Guide/Addendum*. Please read the addendum first, as it details enhancements to overall Galileo system control.

## GALILEO MAP: CONTROL WINDOW SETTINGS

Additional settings are now available to customize the Galileo Map Control Window.

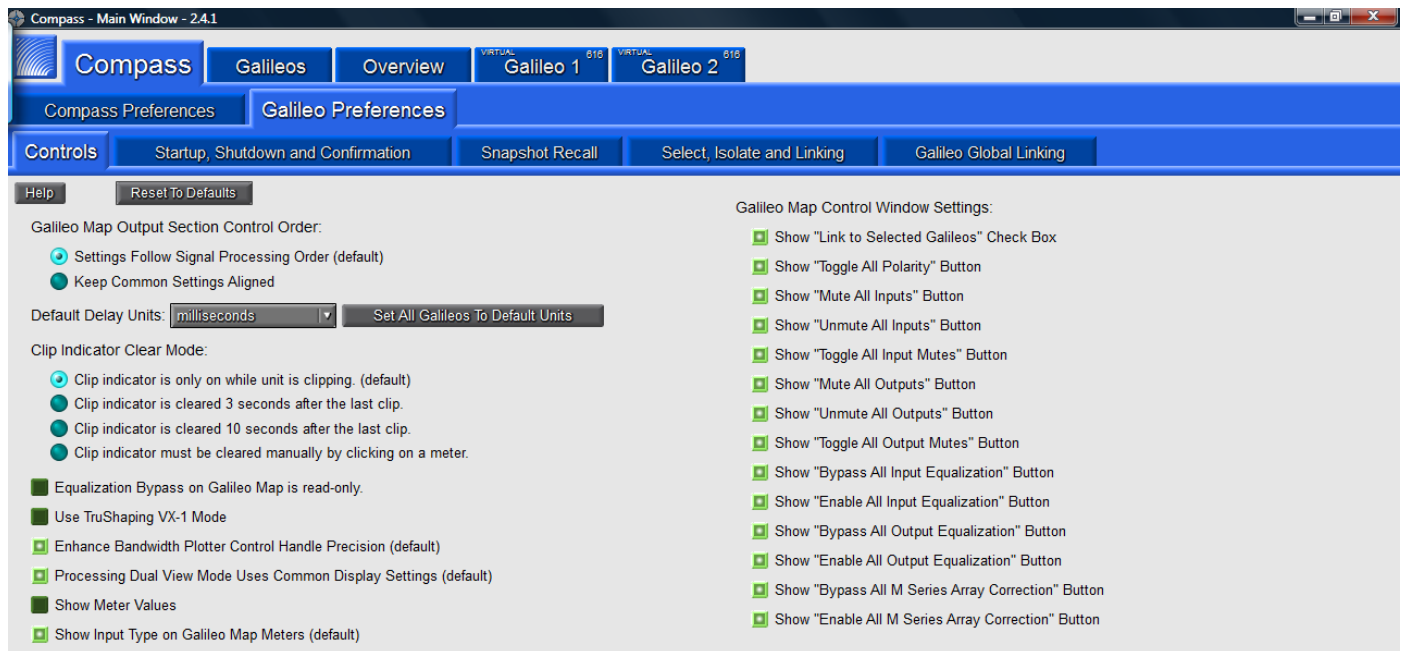


Figure 2. Default Galileo Map Control Window

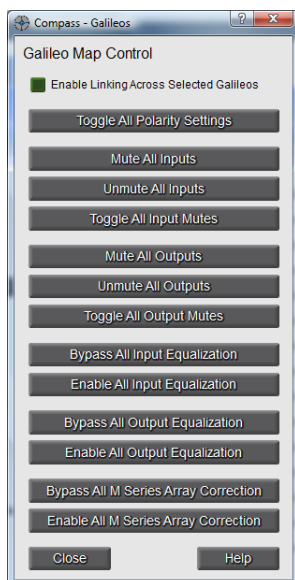


Figure 2. Default Galileo Map Control Window



Figure 3. Modified Galileo Map Control Window



Meyer Sound Laboratories Inc.  
2832 San Pablo Avenue  
Berkeley, CA 94702  
[www.meyersound.com](http://www.meyersound.com)  
T: +1 510 486.1166  
F: +1 510 486.8356

©2010 Meyer Sound. All rights reserved.

*The contents of this document are furnished for informational purposes only, are subject to change without notice, and should not be construed as a commitment by Meyer Sound Laboratories Inc. Meyer Sound assumes no responsibility or liability for any errors or inaccuracies that may appear in this document. Except as permitted by applicable copyright law, no part of this publication may be reproduced, stored in a retrieval system, or transmitted, in any form or by any means, electronic, mechanical, recording or otherwise, without prior written permission from Meyer Sound.*

*Galileo 616 Loudspeaker Management System, Compass Control Software, MAPP Online Pro, and all alphanumeric product names are trademarks of Meyer Sound. Meyer Sound and the Meyer Sound wave logo are registered trademarks of Meyer Sound Laboratories Inc. (Reg. U.S. Pat. & TM. Off.). All third-party trademarks mentioned herein are the property of their respective trademark holders.*